



Quality Manager Report for the Wine Interlaboratory Program Cycle # 027, Fall 2007

This report has been prepared for CTS Wine Demo

Wine Sample SA51 - Chardonnay

Wine Sample SA52 - Chardonnay



If you need assistance with interpreting the statistics and terms used in the report, please reference the various keys and guides on the CTS Website. As always, you may contact the CTS for assistance with any aspect of the program.



Collaborative Testing Services, Inc

21331 Gentry Drive
Sterling, VA 20166 USA

Voice: 571-434-1925

Fax: 571-434-1937

wine@cts-interlab.com

www.collaborativetesting.com



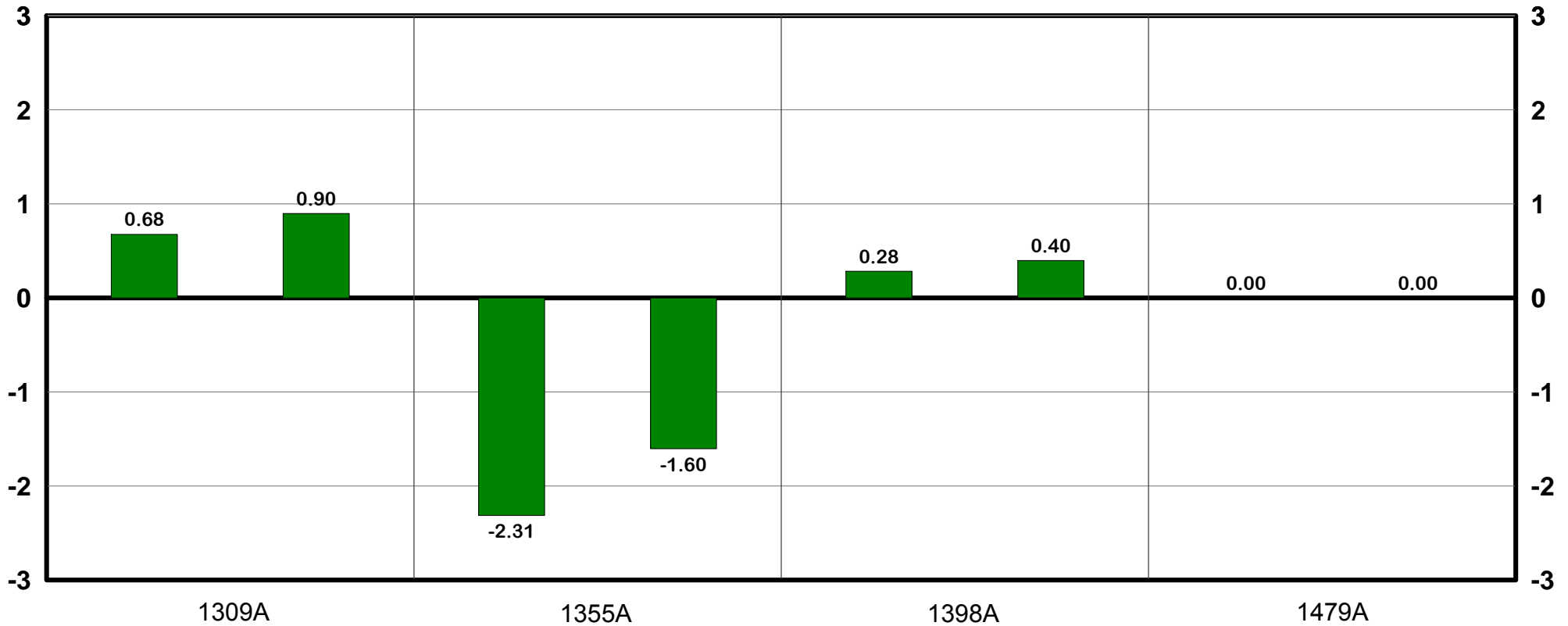


Quality Manager Report for Testing Cycle 027 (Fall 2007)

Analysis 902: Total Sulfur Dioxide

Report Control Number Q CTS

CPVs for each laboratory





Quality Manager Report for Testing Cycle 027 (Fall 2007)

Analysis 902: Total Sulfur Dioxide

Report Control Number Q CTS

data shown in: mg/L

Lab Code	Laboratory Site	WebCode	Methodology	Data Flag	Sample SA51			Sample SA52		
					Lab Mean	Diff from Grand Mean	CPV	Lab Mean	Diff from Grand Mean	CPV
1309	Site 1	U8WV6S	Colormetric Analyzer		91.50	4.29	0.68	96.00	7.17	0.90
1355	Site 2	8FH4JB	Flow Injection Analysis		72.50	-14.71	-2.31	76.00	-12.83	-1.60
1398	Gentry	L2T67H	Aeration Oxidation (AO) Method		89.00	1.79	0.28	92.00	3.17	0.40
1479	QA Lab	P4FHNQ	n/a							

Group Results (laboratories from your enrolled group)

Group Means	84.33	88.00
Between Lab Standard Deviation	10.32 (12.24 %)	10.58 (12.03 %)

Consensus Results (59 of 63 laboratories included)

Grand Means	87.208	88.827
Between Lab Standard Deviation	6.36 (7.29 %)	8.00 (9.00 %)

Results by Methodology (as reported by laboratory)

Test Methodology	Sample SA51 <i>Chardonnay</i>			Sample SA52 <i>Chardonnay</i>			Labs Incl / Rpt	
	Group Mean	Btwn Lab STD	Diff from GM	Group Mean	Btwn Lab STD	Diff from GM		
Ripper Method	86.43	5.37	-0.78	89.14	5.83	0.31	29	30
Aeration Oxidation (AO) Method	89.63	4.01	2.42	90.61	5.40	1.78	10	16
Segemented Flow Analyzer	89.90	3.68	2.69	89.30	7.54	0.47	5	5
Enzymatic Method	96.00	7.07	8.79	98.50	4.24	9.67	2	2
Colormetric Analyzer	92.83	1.89	5.63	97.00	2.18	8.17	3	4
Flow Injection Analysis	87.33	13.53	0.13	91.67	13.65	2.84	3	3